



# JAY CHAMUNDA BRASS INDUSTRIES

Manufacturers Of Brass, Steel & Stainless Steel Components



Plot No. 628/A, GIDC, Phase-2 Industrial Area, Dared Jamnagar-361004 Gujarat (INDIA)

If You Can Draw It,  
We Can Make It For You.

To: The Customers,

Respected Sir/Madam,

Navigated through Internet, come to know that you are having the requirement of Brass Components hence this email to you.

We are pleased to introduce ourselves as one of the leading quality Manufacturer, Exporter and Supplier of PRECISION METAL COMPONENTS with more than 20 years of experience in this field.

Our company has set benchmarks of excellence by catering to the needs an ever-increasing demand of variety of ALUMINUM, BRASS, BRONZE & COPPER components for various industries such as Electronics & Electrical, Automobile Brass Industries, Telecommunication & Network, Industrial, Agricultural, Building Hardware and Consumer goods.

With the use of Modern technology and high grade raw materials we manufacture premium grade products under one roof. We work with complete dedication to offer maximum satisfaction to our esteemed clients in Domestic as well as International Markets.

**Infrastructure:** We have a sophisticated manufacturing unit with well equipped machinery. Our In-house facilities, pressing and drawing operations enable us to develop any product within specified time frame with high precision.

**Machinery & Equipment:** We have all most modern automate machines. Company has conventional and semi-conventional machinery to produce goods quality of products. Sophisticated machine tools provide the finishing touches. We always collect the feedback of our customers and end-users to evaluate and feasible improvement introduced as quick as possible.

All Brass Turned/Pressed Components are manufactured under the supervision of high quality and technically experienced on most modern machines as per our customers' drawings and specifications as per national / international standard.

**Quality Control:** We have unique Inspection facility to achieve goal to zero defect and rejection of any products manufactured. Our all experienced and regularly trained QC Person carry out the Inspection on each individual products.

We have maintained quality standards with sustained implementation of quality parameters by conforming to the latest, approved industries specifications. Our products are made to standard specifications and also precision crafted to exact customers requirements.

**Techno Craft:** Our young, trained, experienced skilled and knowledgeable techno craft team to achieve 100% product excellence. Production Manager, Marketing Manager, Machine Operators, Working Staff, R&D and Technical Experts.

We have developed a strong reputation for quality products by hard work of company Team.

## Quality



Manufacturing inexpensive yet quality products has been JCBI's art since year 1988. JCBI strongly believes in commitment to continuous product development, along with high emphasis on quality.

We measure all items from quality casted materials and extruded rods with accurate measurement and excellent finishing.

### **Testing**

JCBI is fully equipped with complete quality testing equipments such as calipers, all standard gauges with "GO" and "NOT GO" threads, micrometers, electronic vernier gauges and also profile projectors. We have well equipped machineries for complete quality testing like hardness testing, tensile testing, spectro, vernier that helps quality control support.

### **Quality check during Production**

Right from testing of raw material to final packaging, our experienced team of quality experts performs several tests. Our staff scrutinizes at each stage of production to ensure that only the right product reaches you.

### **Calibrating**

To ensure accuracy, each and every instrument and gauges are periodically calibrated.

### **Value for time**

JCBI respects and believes in delivering goods within the time frame mutually discussed with the customer. Being customer-centric organization, we have achieved maximum client satisfaction by delivering goods in-time along with excellent product quality sincerity.

### **Core Values**

Since inception JCBI has been following values and principles which have tremendously helped in its growth and progress.

### **Packing**

JCBI does customized packaging for all goods, they are packed as per international packaging standards like bubble packing, using corrugated boxes, with branding over the box, labeling, using plastic sheets and box strapping. Other than this, we also provide with customized packing as per clients specifications.

# Products

## Brass Rod



We manufacture copper & copper based alloys mainly brass / bronzes extrusion & drawn quality rods / bars in different shapes like – round, hex, square, rectangular & flat. We are also manufacturing section & profile as per customer's specification. All the product will supply in accordance with international standard specification & designation like CDA 36000, cz 121, cuzn39pb3, cw603n etc.

### **Free Cutting Brass Rod :**

It is also known as leaded brass or free machining brass. Free cutting brass material is fair to excellent corrosion resistance, soldering & excellent machine ability. Manufactures of fastener, rivets, domestic appliances, automotive engineering parts, hose fitting, gear, nuts, keys, bearing cages, valve, lock bodies, auto parts, handles, architectural forgings, gun sights etc.. Are the main user of free cutting brass extrusion rod. Free cutting brass extrusion rod is available as per standard like c345, C 353, CDA36000, c3602, c3604, c385, cz131, cz124, cz121, en 12164 - cw606n, CW 603n, CW 614n, cuzn36pb2, cuzn39pb3 & cuzn36pb3.

### **Forging Quality Brass Rod :**

This material is best for hot forging & pressing, it is fair to excellent corrosion resistance, workability. This material is best to manufacture furniture hardware, builders hardware, decorative knobs & handles, valve bodies, fuse bodies, valve components, architectural sections, extruded shapes etc.. Extrusion rod is available as per standard like -c377, c380, cz122, en 12165 - cw617n, cw612n, cuzn40pb2 & cuzn39pb2.

### **High Tensile Brass Extrusion Rod :**

Manganese bronze is similar of high tensile brass. This alloy also available in different combination like leaded, low leaded or lead free. This material is fair for corrosion resistance for marine a mildly acidic environment. Extrusion rod of manganese bronze or high tensile brass is best to use for welding rods, marine fittings, valve, high strength components, steam bodies, shafts & other architectural applications. We serve this material in accordance with C 675, cz 114, cz 115, en 12165, CW 721 r & CW 722r.

### **Lead Free Brass Rod :**

It also called muntz metal. It is available in 63/37, 60/40 & 70/30. A ductile alloy is suitable for blanking, riveting, bending, hot forging & pressing. Lead free brass extrusion rod is use full for application like watch case, watch belts, heat exchanger shells, cold headed parts, brazing rod, pump cylinder liner, large nuts & bolts & door frames. Rod is available in accordance with C 272, C 280, cz108, cz109, cw508l, cw509l, cuzn37 & cuzn40.

### **Dezincification Resistance Brass Rod :**

Standard brass components have gained universal acceptance but in certain experience a severe form of corrosion known as dezincification. Solution to this problem is a dezincification resistance alloy - DZR brass. This material is the ideal choice when aggressive conditions prevail. Main application are PPR-C brass fittings, CPVC brass fittings, plumbing fittings and marine applications. It is available in accordance with c3533, cz132, cw602n & cuzn36pb2as

## BRASS CURRENT & POTENTIAL TERMINALS



Brass Terminals are used mostly in Metering Industries. They are in form of Current Terminals, Potential Terminals & Voltage Terminals etc. Single Phase & 3 phase energy meters needs high quality Terminals for superior conductivity & resistance to corrosion. Variety of terminals can be produced as per custom design & specifications. We usually produce these terminals exclusively as per custom design in the form of Square, Rectangular or in Special Sectional Design. Material: Brass Terminals are available as per IS 319 or BS 249 or BS 2874: CZ 121 or any high graded brass as per custom specification. Sizes & Types: Current Terminal, Potential Terminal & Voltage Terminal some of the type of Terminals that are used in Electric & Energy Meters. Any Size from 2mm is made available as per custom requirement. Finish: Natural, Nickel, Tin or any coating as per custom specification.

### **Special Features of Brass Current Terminals, Brass Potential Terminals:**

Available as per the customer specifications and Designs

#### **Length / Size:**

As per Customer's Design

#### **Finish And Coating:**

Natural, Nickel Plated, Tin Plated brass current Terminals and potential terminals or any coating as customer specification.

#### **Threads:**

ISO Metric (MM Threads)  
BA, BSW (Inches), UNC, UNF or  
Any as per custom design.

#### **Material:**

Free Cutting Brass IS 319 Type (I) or BS 249 Type (I) or High Grade  
Any Special Brass Material Composition as per  
customers requirement



## BRASS CONNECTOR



Wire Connectors: Most control panels use some sort of terminal strips or terminal blocks to connect the control panel wiring to the field wiring. Understanding this crucial element of wire management we manufacture high quality corrosion resistant brass connectors, brass wire strip connectors, and brass single pole threaded wire strip connectors are all available from 5 amps to 25 amps. Special sizes above 25 amps can be developed & manufactured as per custom design & specifications. Material: • Brass Free Cutting IS 319 Type (I) • BS 249 Type (I) • High Grade Special Brass Material Composition can be used as per customers requirement. Finish: Natural, Nickel, Tin Plated, Silver or as per custom requirement. Line Taps (Split Bolts) We produce Line Taps (Split Bolts) as per world class material & specifications. Various types of Line Taps can be opted for various uses like copper to copper connections, aluminum to copper, brass to copper etc. Our High Tensile Material ensures maximum strength & assures against Stress & corrosion. Material: Brass line taps are made with high tensile brass as per BS 2874-CZ 112. Other materials used are Copper, Aluminum & Bronze & SS in one form or other. Sizes: 10mm<sup>2</sup>, 16mm<sup>2</sup>, 25mm<sup>2</sup>, 35mm<sup>2</sup>, 50mm<sup>2</sup>, 70mm<sup>2</sup>, 95mm<sup>2</sup>, 100mm<sup>2</sup>, 120mm<sup>2</sup>, 150mm<sup>2</sup>, 185mm<sup>2</sup>, 240mm<sup>2</sup>, 300mm<sup>2</sup>, 400mm<sup>2</sup>, 500mm<sup>2</sup> Finish: Natural, Nickel Plated, Tin Plated or any coating as per customer specification. Cable Clamps: Comb type cable clamps are manufactured from very high quality brass material & are designed to properly grip heavy dual cables present at Railway Tracks, Power Stations & at heavy electric Fields. Material: Brass Free Cutting IS 319 Type (I) or BS 249 Type (I) or any High Grade Special Brass Material Composition can be used as per customers requirement. SS 304 is used for accessories. Finish: Natural, Nickel Plated, Tin Plated or any coating as per customer specification.

- Brass Wire Strip Connectors
- Brass Single Pole Threaded Wire Strip Connectors

### **Specification of brass connectors, brass wire strip connectors, and brass single pole threaded wire strip connectors:**

- Available from 5 amp to 25 amp

### **Finish And Coating:**

- Natural, Nickel Plated, Tin Plated brass connectors, brass wire strip connectors, and brass single pole threaded wire strip connectors or any coating as per customer specification.

### **Material:**

- Free Cutting Brass IS 319 Type (I) or BS 249 Type (I) or High Grade
- Any Special Brass Material Composition as per customers requirement

Any kind of brass connectors, brass wire strip connectors, and brass single pole threaded wire strip connectors can be developed and supplied exactly as per customer specifications.

## BRASS SEALING SCREW



**Length / Size:**

As per Custom Designs or requirements

**Standard Specification Followed:**

BS 4183, BS 3643, BS 57, BS 93, IS 1367/1366

**Threads:**

ISO Metric (MM Threads) BA, BSW (Inches), UNC, UNF or Any as per custom design.

**Material:**

**In Case Of Turned Machine Brass Screws**

Free Cutting Brass IS 319 Type (I) or BS 249 Type (I) or High Grade  
Any Special Brass Material Composition as per customers requirement

**In Case Of Cold Forged Machine Screws**

Brass as per IS 4413 or BS 2874/Cz108 or High grade mild steel in case cold forged Machine MS  
Screws.

**Finish And Coating:**

Natural, Nickle Plated, Tin Plated brass screws and MS screws or any coating as per customer  
specification.

## **BRASS INSERTS**



### **Brass Insert Types:**

- Brass Threaded Inserts
- Brass Knurled Inserts
- Brass Inserts for Plastics
- Brass Inserts for Wood and Clipboard
- Brass Moulded Inserts
- Brass Round Knurled Inserts
- Brass Hexagonal Inserts
- Brass Square Inserts

### **Threads:**

- ISO Metric (MM Threads)
- BA, BSW (Inches), UNC, UNF or
- Any as per custom design

### **Special Features of Brass Inserts:**

- Threads as per International Go & Not Go Standards.
- Deep Groove for maximum Pull Out Resistance.
- Inner Diameter (I/D) after Threads with very close tolerance to prevent unnecessary flush to enter into the brass inserts.

### **Knurling Available:**

- Diamond
- Straight
- Unidirectional

### **Length / Size:**

- Begins from M2 or equivalent threads and up to any size as per custom design or Requirement

### **Typical Application:**

- Instrumentation, Telecommunications, and other Plastic Cases Assembly.

### **Material:**

- Free Cutting Brass IS 319 Type (I) or BS 249 Type (I) or High Grade
- Any Special Brass Material Composition as per customers requirement

### **Finish And Coating:**

- Natural, Nickle Plated, Tin Plated brass inserts or any coating as per customer specification.

## **BRASS SCREW**



### **BRASS SCREW TYPES**

- Cheese head slotted screws
- Couter sunk head slotted Screws
- Round head slotted screws
- Pan head slotted screws
- Raised head slotted screws
- Philips head screws
- Combination head screws
- Socket head screws
- Terminals screws for connector block
- Knurled slotted screws (thumb screws)
- Slotted grub screws
- Speical head screws

#### **Length / Size:**

- As per Custom Designs or requirements

#### **Standard Specification Followed:**

- BS 4183, BS 3643, BS 57, BS 93, IS 1367 / 1366

#### **Threads:**

- ISO Metric (MM Threads)
- BA, BSW (Inches), UNC, UNF
- Any as per custom design.

#### **Material:**

##### **In Case Of Turned Machine Brass Screws**

- Free Cutting Brass IS 319 Type (I) or BS 249 Type (I) or High Grade
- Any Special Brass Material Composition as per customers requirement

##### **In Case Of Cold Forged Machine Screws**

- Brass as per IS 4413 or
- BS 2874/Cz108 or
- High grade mild steel in case cold forged Machine MS Screws.

#### **Finish And Coating:**

- Natural, Nickle Plated, Tin Plated brass screws and MS screws or any coating as per customer specification.



## BRASS NEUTRAL & EARTH LINKS



### **Brass Neutral Links**

Manufacturer, Supplier and Exporter of all kind of Neutral Brass Bar Link, Neutral Links, Brass Neutral Links, Neutral Bars, Terminal Blocks, Terminal Bars, Earthing Block, Earthing Bars, Brass Electrical Neutral Links can be developed and supplied exactly as per customer specifications.

Manufactured keeping in mind the highest levels of quality, we are availing to the customers a standard range of these Brass Neutral Links. The offered range has been processed out of the best grade brass that had been purchased by our procuring agents from the most reliable sources present in the market. Available in neutral bars, the size can be pre-specified by the customers as per their needs.

We offer to the customer this range of Brass Neutral Links that is availed to the customers in terminal blocks of up to 1 metre length. Our firm is also able to provide these in 4 way and 8 way links. We have stringently manufactured these links for all types of panel board, switch gears and electrical switch board.

### **Brass Earth Links**

Since the inception of our organization, we are working sincerely hard to offer our customers a qualitative range of Brass Earth Bars. These brass earth bars is designed & developed by our deft professionals in accordance with the industry laid norms. Furthermore, our customers can avail these brass earth bars in both standard and customized forms.

## **BRASS NUTS & BOLTS**



### **BRASS BOLTS:**

Brass Carriage Bolts, Hex Bolts, Hex Flange Bolts, Brass Wing Bolts, Indented hex Bolts, Indented hex Bolts, Thumb Screw, Brass Eye Bolts, Square Bolts, Structure Bolts, Brass T Bolts, U Bolts, Hanger Bolts

**Standard Followed :**

BS 4183, BS 3643, BS 93, IS 1367/1366

**Material :**

Any Special Brass Material Composition as per Customer`s Requirement.

**Length / Size :**

As per Custom Designs or requirements.

**Finish And Coating :**

Brass Natural, Nickle Plated, Tin Plated or any coating as per customer specification.

Any kind of Brass Bolts can be developed & Supplied exactly as per Customer Specifications, Design & Requirement

### **BRASS NUTS :**

Hex full nuts, Hex lock nuts, Hex rivet nut, Brass Hex Nuts, Brass Conduit Nuts, Coupling Nuts, Square nuts, Brass wing Nuts, Brass Jam Nuts, Brass Panel Nuts, Cap Nuts, Nylon Insert Lock Nuts

**Standard Followed :**

BS 4183, BS 3692, BS 57, BS 93, IS 1367/1366

**Material :**

Any Special Brass Material Composition as per Customer`s Requirement.

**Length / Size :**

As per Custom Designs or requirements.

**Finish And Coating :**

Brass Natural, Nickle Plated, Tin Plated or any coating as per customer specification.

Any kind of Brass Nuts can be developed & Supplied exactly as per Customer Specifications, Design & Requirement.

## **BRASS ELECTRICAL PLUGPIN & SOCKETPIN**



### **Electric Pins :**

5 Amp Pin and Sockets  
10 Amp Pin and Sockets  
15 Amp Pin and Sockets  
Flat Plug Pins for 13 Amp 8, 15 Amp Plugs  
13 Amp Regular Plug Pins. Moulded Pins  
Industrial Female Plug Pins  
Industrial Socket Pin

### **Material :**

Any Special Brass Material Composition as per Customer`s Requirement.

### **Threads :**

ISO Metric, BA , BSW , UNC , UNF , UNEF etc. Any Thread`s As Per Customer`s Design.

### **Length / Size :**

As per Custom Designs or requirements.

### **Finish And Coating :**

Brass Natural, Nickel Plated, Tin Plated or any coating as per customer specification.  
Any kind of Brass electrical plug pins & brass socket pins can be developed & Supplied exactly as per Customer Specification, Design & Requirement

## BRASS & MS SPACER



Jay Chamunda Brass Industries has a vast range of spacers designed for use in various applications. These spacers are available in Round & Hex shapes. A standoff is used in mechanics and electronics to separate two parts from one to another. Standoffs can be many size and shape and made of many different materials.

Material: BS2872, CZ112, CZ121

Sizes: M4, M5, M6, M8, M10, M12, M14.

Finish: Bright Nickel, Natural, Electro-Tin, Chromeor, Nickel plated

### CUSTOM MADE BRASS SPACERS

Don't worry if the part you require is not listed - we specialize in producing non-standard Brass Spacers in a wide range of materials at very competitive prices. With this in mind we invite you to specify your requirements however large or small.

Threads :

ISO Metric (MM Threads)

BA Threads

BSW Threads (inches)

UNC & UNF Threads

Any threads as per custom design.

Any types of Spacer can be developed as per client's requirement, specifications and drawing.



## BRASS ANCHOR

# Brass Anchors



We at Jay Chamunda Brass Industries offer impeccable range of brass anchors that are highly valuable for our clients. They are manufactured wisely by opting for quality raw material and strict adherence to international quality standards. Every time when we focus on diverse client demands, we are able to deliver our products in varied dimensions and specifications.

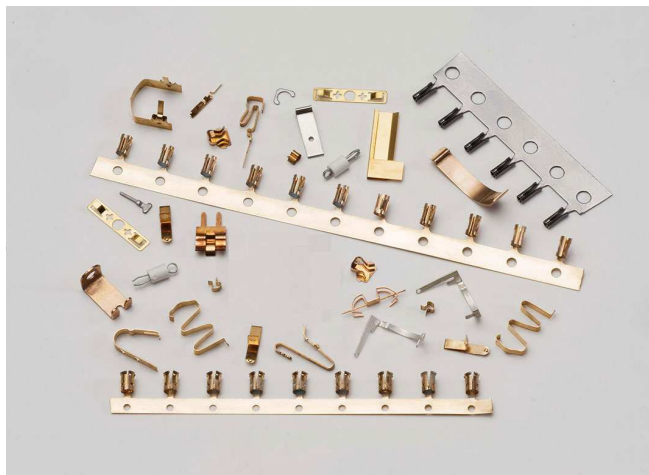
Material: Brass - BS 2872 CZ 112.

Finish: Natural, Electro-Tin, Chrome or Nickel plated.

Sizes: M4, M5, M6, M8, M10, M12, M14

- Brass Anchors Anchoring Systems.
- Brass Spring Anchor Brass Anchor fasteners Brass Anchors Drop in anchors.
- Brass Plain Anchor Brass drop in anchors.
- Brass Wood Anchors Brass anchor bolts.
- Brass Anchor With Thread Brass Anchor bolts.
- Brass Anchors Sizes available as per customers drawing or sample Brass Anchors Brass Anchor Fasteners Brass Wood Anchors Brass Door Anchors Brass Wedge Anchors Wedge fasteners.

## Sheet Cutting Parts



## **BRASS BATTERY TERMINALS**



### **Battery Terminals :**

Lucas type battery terminals  
Angel type battery terminals  
Toyota Type Battery Terminals  
Seiwa Type Battery Terminals  
Strip Type Battery Terminals  
Dustan Type Battery Terminals  
Leyland type battery terminals  
Telco type battery terminals  
European Car type battery terminals

### **Material :**

Any Special Brass Material Composition as per Customer`s Requirement.

### **Threads :**

ISO Metric, BA , BSW , UNC , UNF , UNEF etc. Any Thread`s As Per Customer`s Design.

### **Length / Size :**

As per Custom Designs or requirements.

### **Finish And Coating :**

Brass Natural, Nickel Plated, Tin Plated or any coating as per customer specification.  
Any kind of Battery Terminals & Brass Battery Terminals can be developed & Supplied exactly as per Customer Specifications, Design & Requirement.

## Brass Cable Glands



We are manufacturing and exports high-quality Brass Cable Glands and Accessories, Brass Cable Glands, Conduit Fittings Accessories made from Brass, Nickel Plated Brass, Stainless Steel and Aluminum. We offer complete Brass Cable Gland Kits include Brass Cable Glands, Earth Tags, Lock Nuts, Washers and PVC Shrouds with Premium Packaging. We offer a wide range of Brass Cable Glands & Accessories for Cable Entry Systems, Junction Box, Enclosures and Electrical Cable Fittings in Standard and Custom Designs as per requirements.

We offer extensive range of Brass Cable Glands, Cable Accessories and Flexible Conduit Fittings Accessories in Multiple Dimensions, Thread Forms and Materials, Also Conform to the Latest International Standards and Suitable for a wide range of Applications - Both Indoor and Outdoor Use.

### **Features**

Made from high quality and tested raw materials to provide excellent performance

Dimensional Accuracy & Excellent Surface Finish

Durable & Impact resistant parts

Thread as per International Go & Not-Go Standards

Customized as per client's requirement

### **Standard**

DIN, ISO, ASTM, EN, JIS, GB and other International Standards.

### **Material**

As per client's requirement

### **Surface Plating & Coating**

Natural Clean / Nickel Plated / Electro Tin Plated / Silver Plated / Copper Plated / Zin Plated / Chrome Plated / Any Specific Surface Finish

## **BRASS FITTINGS & BRASS VALVES**



### **High Quality Brass Fittings**

We perform all our operations under the regulation of highly qualified engineering professionals on modernized machines and as per the required global standards. The material used for manufacturing brass pipe fittings includes free cutting brass, high grade free cutting brass, any special non-ferrous material grade composition as per the client requirements. The threads comprise of ISO Metric (MM Threads), BA, BSW (Inches), UNC, UNF and any threads as per custom design. The finishing and coating consists of natural, electro-tin, chrome and nickel plating. The brass fittings come in different sizes and are available as drawing or custom specifications.

### **Brass Pipe Fittings**

The different types of brass fittings include brass sanitary fittings, brass forged fittings, brass pipe fittings, brass flare fittings, brass LPG gas fittings, brass hydraulic fittings, brass pneumatic fittings, brass hose fittings, brass air brake hose fittings, brass compression fittings and brass plumbing fittings. We manufacture quality brass fittings products and have the right tools to do the work. We can develop any kind of brass fittings as per customized specifications and requirements.

### **Brass Valves**

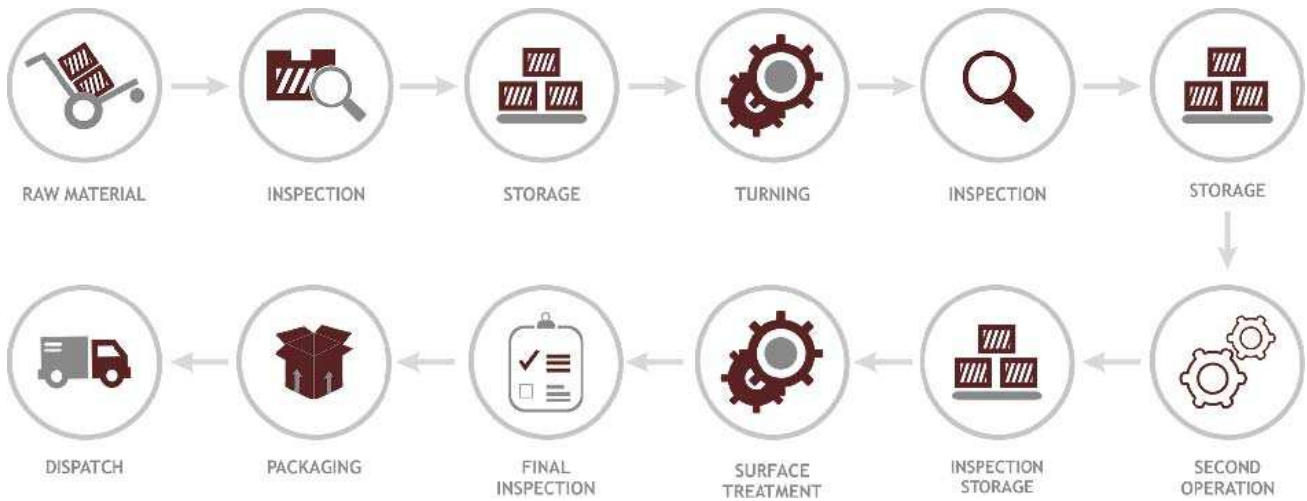
Size :-	1/4",3/8",1/2",3/4",1",1 1/4", 1 1/2",2"
Flange Dimm. :-	Suitable to mount between two standard pipe flanges.
Material :-	Brass Forged
Use in:-	Chemical Plant,Water Supply,Flush Valve
Thread :-	Bsp , Nptf
Finishing :-	Natural, Brass, Nickel, Zinc Plating, Any Coating As Per Customer Requirements



## **-: Packing :-**

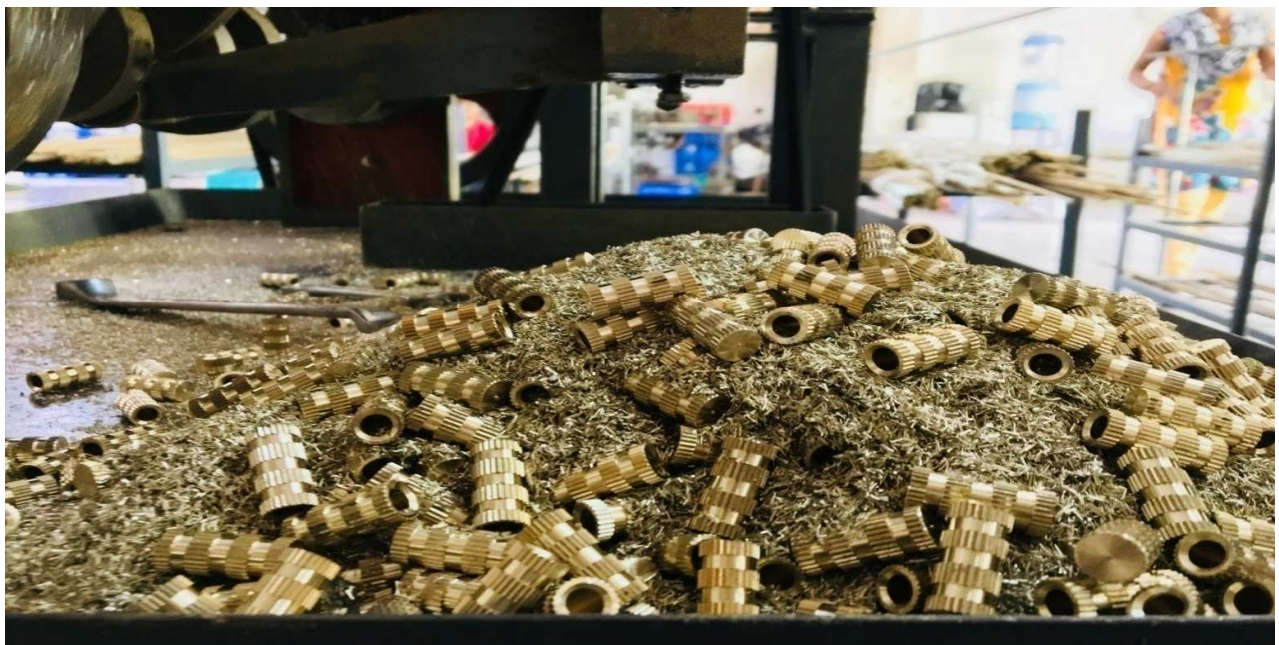
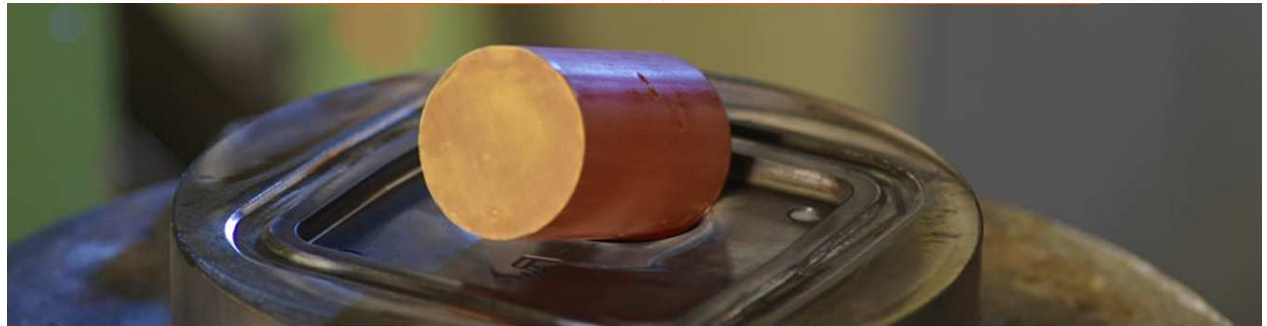


## **-:Manufacturing Process:-**





**-: Machining :-**



# Certificate of Registration

This is to Certify that  
Quality Management System of

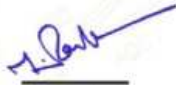
**JAY CHAMUNDA BRASS INDUSTRIES**

PLOT NO.628/A, G.I.D.C., PHASE 2, DARED, JAMNAGAR - 361004,  
GUJARAT, (INDIA)

has been assessed and found to conform to the requirements of  
**ISO 9001:2015**  
for the following scope :

MANUFACTURER, EXPORTER & SUPPLIER OF ENERGY METER TERMINALS,  
SEALING SCREW AND METAL COMPONENTS AS PER CUSTOMER'S  
REQUIREMENTS

Certificate No	<b>201QFU19</b>	Issuance Date	26/08/2020
Initial Registration Date	26/08/2020	Date of Expiry	25/08/2023
1st Surve. Due	26/07/2021	2nd Surve. Due	26/07/2022



Director



ACCREDITED  
Management Systems  
Certification Body  
MSCB-119



AQC MIDDLE EAST FZE.

Head Office: 13-1420 F Amber Green Tower, Sheikh Khalifa Bin Zayed Road, 2, Ajman, UAE. e-mail: info@aqcmiddleeast.com,  
Key Location: 403, Madhavan Building, 25, Nehru Place, New Delhi-110019, India.

Validity of this certificate is subject to successful completion of surveillance audits on or before the due. In case surveillance audit is not allowed to be conducted, this certificate shall be suspended/terminated.  
Certificate Enquiry/Queries: Please check the validity of certificate at <http://www.aqc.com/clients/clients.aspx> or [management@aqc.com](mailto:management@aqc.com) or Active Client.  
(Certificate is the property of AQC Middle East FZE and shall be returned immediately when demanded)



# Certificate of Registration

This is to Certify that

**Jay Chamunda Brass Industries**

Plot No. 628 - A, G.I.D.C Phase 2, Industrial Area, Dared, Jamnagar - 361004,  
(Gujarat), India.

has been assessed by RSBV and found to comply with the requirements of

**RoHS**

Compliance for the Product:

For the following Scope:

**Manufacturer, Exporter & Supplier of Energy Meter Terminals, Sealing Screw and Metal Components as per Customer's Requirements**

This Certificate of Compliance has been issued against RoHS Directive 2011/65/EU on the basis of Product Testing as per Test Standards and Test Report No. R/E-5039. Technical File and Test Reports are at the Licence Holder's Disposal.

Certificaat Nummer / Certificate No. : RO-BV-2203-5039

Datum Van Publicatie / Date of Issue : 26/03/2022  
Vervaldatum / Date of Expiry : 25/03/2025  
1st Annual surveillance audit due on : 25/02/2023  
1Ind Annual surveillance audit due on : 25/02/2024

**Royal Stancert B.V.**

Federatieve Beoordelingen - Wereldwijde Beoordelingen

Regd. Office - Joop Geestinkweg 701, 1114 AD Amsterdam, The Netherlands.  
(KvK-Nummer: 71431802 / RSIN 858713159 - Rechtsvorm - Besloten Vennootschap)

This certificate remains the property of Royal Stancert B.V. and must be returned whenever demanded. The validity of this certificate can be verified at <http://www.royalstancert.org>. Royal Stancert B.V. is an independent system, product and personal assessment body accredited by Global Euro Accreditation Centre, Georgia. (GCIN - 654). Email: [info@royalstancert.org](mailto:info@royalstancert.org)



Director (Certification)



PAC-GEAC-1506-299






The 'Brass City' of Gujarat, India!



**Company Name:** JAY CHAMUNDA BRASS INDUSTRIES  
**Factory Address:** Plot No. 628/A, GIDC Phase-II, Dared,  
Jamnagar 361004. Gujarat [INDIA]



**Whatsapp :**  +91-7990447473

**Phone No.:** +91-288-2730739  
**Website:** www.jcbiindia.com  
www.jaychamundabrass.com



**Email:** info@jcbiindia.com  
info@jaychamundabrass.com



**GST NO.:** 24ADKPP4268J1Z5



Nearest Domestic Air Port : Jamnagar - 3 kms.  
Nearest International Air Port : Ahmedabad 325 kms.



Nearest Port : Kandla - 222 kms., Mundra - 300 kms.

